

A photograph of a wine cellar. In the foreground, a tall, black wine cabinet with a glass door is open, revealing several shelves of wine bottles. The cabinet is illuminated from within, and the bottles are arranged on wooden racks. The background shows a long, narrow wine cellar with rows of wine racks and warm, ambient lighting. The floor is light-colored, and the ceiling has recessed lighting. The overall atmosphere is sophisticated and elegant.

Masterzen



Masterzen - Elevating zen. Masterzen.

2

Every bottle of wine carries a story. The story of the vineyard, of time, of its creator.

At **Masterzen**, we set out to write the next chapter of that story. Not with words, but with devotion to a purpose: to offer wine the ideal conditions for storage, aging, and presentation. To create an environment in which its value does not merely endure — it evolves.

Masterzen wine preservation systems lie at the heart of our mission. Designed in Greece, with advanced expertise, flawless craftsmanship, and design flexibility, Masterzen delivers the perfect balance of temperature, humidity, and light protection — the three elements that transform simple storage into a ritual of preservation and enjoyment.

From built-in units for 18 bottles, designed for private residences, to professional cellars accommodating up to 3,000 bottles for hotels, restaurants, and wineries, every solution is the result of a seamless fusion of aesthetic intelligence and engineering precision.

What truly sets Masterzen apart is not only the quality of its products, but also the diversity of those who trust it. From iconic fine-dining restaurants and high-end hotels, to wineries, wine bars, and private clients who wish to bring a note of refined pleasure into their homes. Masterzen is not for the few — it is for all those who understand the value of what is truly good. For those who seek authenticity rather than display. Who choose a premium product not to impress, but to enjoy — as they deserve.

For us, wine is not merely a product. It is culture, memory, experience. And every bottle deserves its own stage.

That is precisely the stage we create — carefully tailored to the space, the style, and the personality of each client.

Our philosophy does not stop at wine. Masterzen extends its expertise to other forms of elevated sensory pleasure: cigar humidors, DryAge, fish or meat, cabinets, cheese and charcuterie maturation systems, special-condition chambers, and micro-gardens. We ensure impeccable preservation and maturation, delivering perfect conditions within an exceptionally elegant, **customer-facing** result. Sophisticated systems that do more than preserve — they regulate, reveal, and elevate refinement itself. Because the valuable requires care, not display.

Because luxury is not a privilege. It is a choice.
And Masterzen makes it a daily experience.

Masterzen Portfolio Innovation

Wine Cellars



Wine Preservation



Wine Gadgets



Wine Chiller



Wine Furniture



Cigar Humidors



Food Chambers



Dry Age



Beverage Fridge



MicroGarden



Wine Cellars



Wine Cellars Door Finish



Full Glass Black Door



SS Inox Door



Décor Panel Door



Wine Cellars Door Finish

Indicative Décor Panel Door







Wine Cellars Door Finish

Décor Panel Door







Distinct Masterzen Characteristics

Free standing, Built in and fully Built in Models



Combination of Glass and stainless-steel framing. Full Glass Black door or a custom décor panel ready door, creating a seamless, sophisticated look & feel across our entire collection.



Wine cabinets fully equipped with wooden shelves with telescopic rails, allowing your wines to be stored perfectly, ensuring outstanding safety and exceptional ergonomics.



Display shelves crafted to highlight your most valuable collection. Specially designed shelving for Burgundy-style bottles, ensuring both perfect support and visual harmony.



Easy access to every bottle thanks to the fully extendable wooden shelves equipped with telescopic rails. It has never before been so easy to find the wine you were looking for.



White, blue, or orange LED lighting on every shelf, combining outstanding functionality with a stunning aesthetic result. Light your wines the way they deserve to be seen.



Independent temperature zones ranging from 5–20°C, ensuring absolute protection as well as the ideal serving temperature for every type of wine.











ESTATE ARGYROS
2020
SANTORINI
CUVÉE GÉRON AMPELO
PROFESORIS PANTAZIS

ESTATE ARGYROS
2022
SANTORINI
CUVÉE MONSIGNORI
PROFESORIS PANTAZIS

ESTATE ARGYROS
2020
SANTORINI
CUVÉE GÉRON AMPELO
PROFESORIS PANTAZIS

ESTATE ARGYROS
2020
SANTORINI
CUVÉE GÉRON AMPELO
PROFESORIS PANTAZIS

ESTATE ARGYROS
2020
SANTORINI
CUVÉE GÉRON AMPELO
PROFESORIS PANTAZIS

ESTATE ARGYROS
2021
SANTORINI
CUVÉE EIDEMNI
PROFESORIS PANTAZIS

ESTATE ARGYROS
2020
SANTORINI
CUVÉE MONSIGNORI
PROFESORIS PANTAZIS

ESTATE ARGYROS
2020
SANTORINI
CUVÉE GÉRON AMPELO
PROFESORIS PANTAZIS

ESTATE ARGYROS
2020
SANTORINI
CUVÉE EIDEMNI
PROFESORIS PANTAZIS

ESTATE ARGYROS
2020
SANTORINI
CUVÉE MONSIGNORI
PROFESORIS PANTAZIS

ESTATE ARGYROS
2020
SANTORINI
CUVÉE EIDEMNI
PROFESORIS PANTAZIS

ESTATE ARGYROS
2020
SANTORINI
CUVÉE EIDEMNI
PROFESORIS PANTAZIS

ESTATE ARGYROS
2020
SANTORINI
CUVÉE EIDEMNI
PROFESORIS PANTAZIS



Wine Cellars Range

	Width	Depth	Height	Installation type	Full Glass Black Door	SS Inox	Décor Panel	Black door, Small Handle	No of Bottles	Temp. Zones
XPR W18S	59	54,5	45,3	Πλήρως εντοιχίσιμη, Front Ventilation	✓				18	1
XPR W20S	29,5	57	82	Εντοιχίσιμη / Ελεύθερη	✓	✓			20	1
XPR W20D	29,5	57	82	Εντοιχίσιμη / Ελεύθερη			✓		17	2
XPR W24S	59,2	55,7	45,7	Πλήρως εντοιχίσιμη	✓	✓	✓		24	1
XPR W28DT	59	55,5	59,5	Πλήρως εντοιχίσιμη, Front Ventilation	✓				24	2
XPR W30D	59	57	59,8	Πλήρως εντοιχίσιμη	✓	✓	✓		26	2
XPR W32DT	49	49	84,3	Μόνο Ελεύθερη	✓				26	2
XPR W35D	38	60	87	Εντοιχίσιμη / Ελεύθερη				✓	29	2
XPR 40S	48,5	60	82	Μόνο Ελεύθερη	✓				44	1
XPR W40DT	48,5	60	82	Μόνο Ελεύθερη	✓	✓			38	2
XPR Mykonos (Λευκό)	48,5	64	82,5	Μόνο Ελεύθερη					46	1
XPR Milos (Κόκκινο)	48,5	64	82,5	Μόνο Ελεύθερη					46	1
XPR Santorini (Μαύρο)	48,5	64	82,5	Μόνο Ελεύθερη					46	1
XPR W46S	59,5	57	82	Εντοιχίσιμη / Ελεύθερη			✓	✓	46	1
XPR W46DT	59,5	57	82	Εντοιχίσιμη / Ελεύθερη	✓	✓	✓	✓	39	2
XPR W48DT	59,2	56	88,5	Πλήρως εντοιχίσιμη	✓	✓	✓		42	2
PRM W88	59,5	71	100	Εντοιχίσιμη / Ελεύθερη	✓				90	1
XPR W88S	59,5	71	100	Εντοιχίσιμη / Ελεύθερη	✓				83	1
XPR W88DT	59,5	71	100	Εντοιχίσιμη / Ελεύθερη	✓	✓			72	2
XPR W106DT	59,5	57,1	181,6	Πλήρως εντοιχίσιμη	✓		✓		87	2
XPR W120S	59,5	72	127	Εντοιχίσιμη / Ελεύθερη	✓				112	1
XPR W120DT	59,5	72	127	Εντοιχίσιμη / Ελεύθερη	✓	✓			104	2
XPR W122DT	59,5	57	179	Εντοιχίσιμη / Ελεύθερη	✓	✓	✓		93	2
XPR W180S	59,5	72	172	Εντοιχίσιμη / Ελεύθερη	✓	✓			163	1
XPR W180DT	59,5	71	172	Εντοιχίσιμη / Ελεύθερη	✓	✓	✓		154	2
XPR W300S	75	71	201,5	Μόνο Ελεύθερη	✓	✓			303	1
XPR W300DT	75	71	201,5	Μόνο Ελεύθερη	✓	✓			262	2
XPR W330	120	72	172	Εντοιχίσιμη / Ελεύθερη	✓	✓			326	2
XPR W320	120	72	172	Εντοιχίσιμη / Ελεύθερη	✓	✓			317	3
XPR W310	120	71	172	Εντοιχίσιμη / Ελεύθερη	✓	✓			308	4
XPR W500	180	71	172	Εντοιχίσιμη / Ελεύθερη	✓	✓			489	4
XPR W650	240	71	172	Εντοιχίσιμη / Ελεύθερη	✓	✓			652	4



Free Standing only Models

	Width	Depth	Height	Full Glass Black Door	SS Inox	Χωρητικότητα σε φιάλες	Ζώνες θερμοκρασίας
XPR W32DT	49	49	84,3	✓		26	2
XPR 40S	48,5	60	82	✓		44	1
XPR W40DT	48,5	60	82	✓	✓	38	2
XPR Mykonos (Λευκό)	48,5	64	82,5			46	1
XPR Milos (Κόκκινο)	48,5	64	82,5			46	1
XPR Santorini (Μαύρο)	48,5	64	82,5			46	1
XPR W300S	75	71	201,5	✓	✓	303	1
XPR W300DT	75	71	201,5	✓	✓	262	2



Free Standing



	Width	Depth	Height	Full Glass Black Door	SS Inox	Décor Panel	Black door, Small Handle	No of Bottles	Temp. Zones
XPR W20S	29,5	57	82	✓	✓			20	1
XPR W20D	29,5	57	82				✓	17	2
XPR W32DT	49	49	84,3	✓				26	2
XPR W35D	38	60	87				✓	29	2
XPR 40S	48,5	60	82	✓				44	1
XPR W40DT	48,5	60	82	✓	✓			38	2
XPR Mykonos (Λευκό)	48,5	64	82,5					46	1
XPR Milos (Κόκκινο)	48,5	64	82,5					46	1
XPR Santorini (Μαύρο)	48,5	64	82,5					46	1
XPR W46S	59,5	57	82			✓	✓	46	1
XPR W46DT	59,5	57	82	✓	✓	✓	✓	39	2
PRM W88	59,5	71	100	✓				90	1
XPR W88S	59,5	71	100	✓				83	1
XPR W88DT	59,5	71	100	✓	✓			72	2
XPR W120S	59,5	72	127	✓				112	1
XPR W120DT	59,5	72	127	✓	✓			104	2
XPR W122DT	59,5	57	179	✓	✓	✓		93	2
XPR W180S	59,5	72	172	✓	✓			163	1
XPR W180DT	59,5	71	172	✓	✓	✓		154	2
XPR W300S	75	71	201,5	✓	✓			303	1
XPR W300DT Inox	75	71	201,5	✓	✓			262	2
XPR W330	120	72	172	✓	✓			326	2
XPR W320	120	72	172	✓	✓			317	3
XPR W310	120	71	172	✓	✓			308	4
XPR W500	180	71	172	✓	✓			489	4
XPR W650	240	71	172	✓	✓			652	4

Build in Models, suitable for sidebyside installation

	Width	Depth	Height	Full Glass Black Door	SS Inox	Décor Panel	Black door, Small Handle	No of Bottles	Temp. Zones
XPR W20S	29,5	57	82	✓	✓			20	1
XPR W20D	29,5	57	82				✓	17	2
XPR W35D	38	60	87				✓	29	2
XPR W46S	59,5	57	82			✓	✓	46	1
XPR W46DT	59,5	57	82	✓	✓	✓	✓	39	2
PRM W88	59,5	71	100	✓				90	1
XPR W88S	59,5	71	100	✓				83	1
XPR W88DT	59,5	71	100	✓	✓			72	2
XPR W120S	59,5	72	127	✓				112	1
XPR W120DT	59,5	72	127	✓	✓			104	2
XPR W122DT	59,5	57	179	✓	✓	✓		93	2
XPR W180S	59,5	72	172	✓	✓			163	1
XPR W180DT	59,5	71	172	✓	✓	✓		154	2
XPR W330	120	72	172	✓	✓			326	2
XPR W320	120	72	172	✓	✓			317	3
XPR W310	120	71	172	✓	✓			308	4
XPR W500	180	71	172	✓	✓			489	4
XPR W650	240	71	172	✓	✓			652	4



Décor Panel Ready Models

	Width	Depth	Height	No of Bottles	Temp. Zones
XPR W24S	59,2	55,7	45,7	24	1
XPR W30D	59	57	59,8	26	2
XPR W46S	59,5	57	82	46	1
XPR W46DT	59,5	57	82	39	2
XPR W48DT	59,2	56	88,5	42	2
XPR W106DT	59,5	57,1	181,6	87	2
XPR W122DT	59,5	57	179	93	2
XPR W180DT	59,5	71	172	154	2





Décor Panel Ready models



 Masterzen

Fully Build in (Integrated)

	Width	Depth	Height	Installation type	Full Glass Black Door	SS Inox	Décor Panel	No of Bottles	Temp. Zones
XPR W18S	59	54,5	45,3	Πλήρως εντοιχίζομενη. Front Ventilation	✓			18	1
XPR W24S	59,2	55,7	45,7	Πλήρως εντοιχίζομενη	✓	✓	✓	24	1
XPR W28DT	59	55,5	59,5	Πλήρως εντοιχίζομενη. Front Ventilation	✓			24	2
XPR W30D	59	57	59,8	Πλήρως εντοιχίζομενη	✓	✓	✓	26	2
XPR W48DT	59,2	56	88,5	Πλήρως εντοιχίζομενη	✓	✓	✓	42	2
XPR W106DT	59,5	57,1	181,6	Πλήρως εντοιχίζομενη	✓		✓	87	2





Models with depth less than 60cm suitable
for Kitchen Installation

	Width	Depth	Height	Full Glass Black Door	SS Inox	Décor Panel	Black door, Small Handle	No of Bottles	Temp. Zones
XPR W18S	59	54,5	45,3	✓				18	1
XPR W20S	29,5	57	82	✓	✓			20	1
XPR W20D	29,5	57	82				✓	17	2
XPR W24S	59,2	55,7	45,7	✓	✓	✓		24	1
XPR W28DT	59	55,5	59,5	✓				24	2
XPR W30D	59	57	59,8	✓	✓	✓		26	2
XPR W35D	38	60	87				✓	29	2
XPR W46S	59,5	57	82			✓	✓	46	1
XPR W46DT	59,5	57	82	✓	✓	✓	✓	39	2
XPR W48DT	59,2	56	88,5	✓	✓	✓		42	2
XPR W106DT	59,5	57,1	181,6	✓		✓		87	2
XPR W122DT	59,5	57	179	✓	✓	✓		93	2



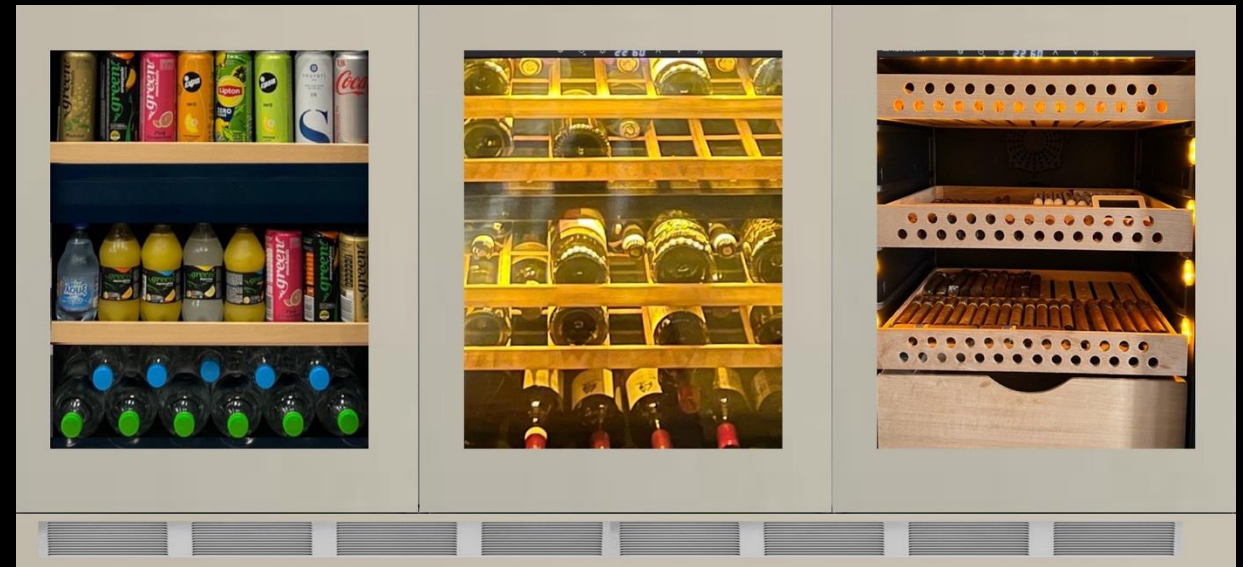


Under Counter Models,



Side by side installation

Beverage, wine, cigars





DryAge, Beverage and Cheese & Salumi Fridge Changers

Display for Cheeses / Cured Meats. Ideal conditions for:

Cheese aging (for fresh and unripe cheeses / cured meats): requires consistently very high humidity levels between 70–80% relative humidity, UVC.

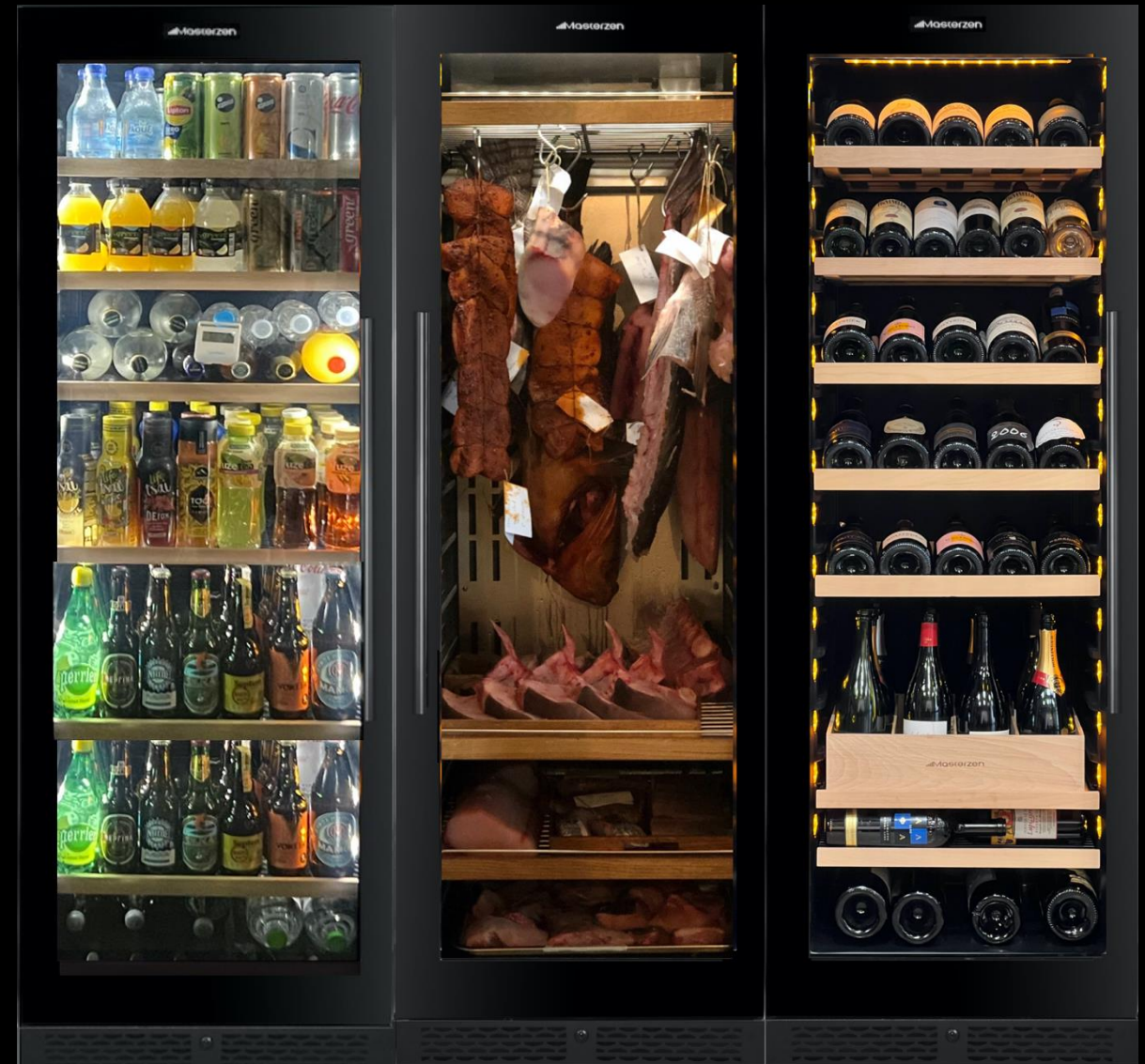
Long-term storage of cheeses: 6–10°C (depending on the type of cheese; vacuum use may be required) with 50% relative humidity.

Ideal storage temperatures for cured meats: 2–6°C.

Cheese storage: 8–16°C with 50% relative humidity.

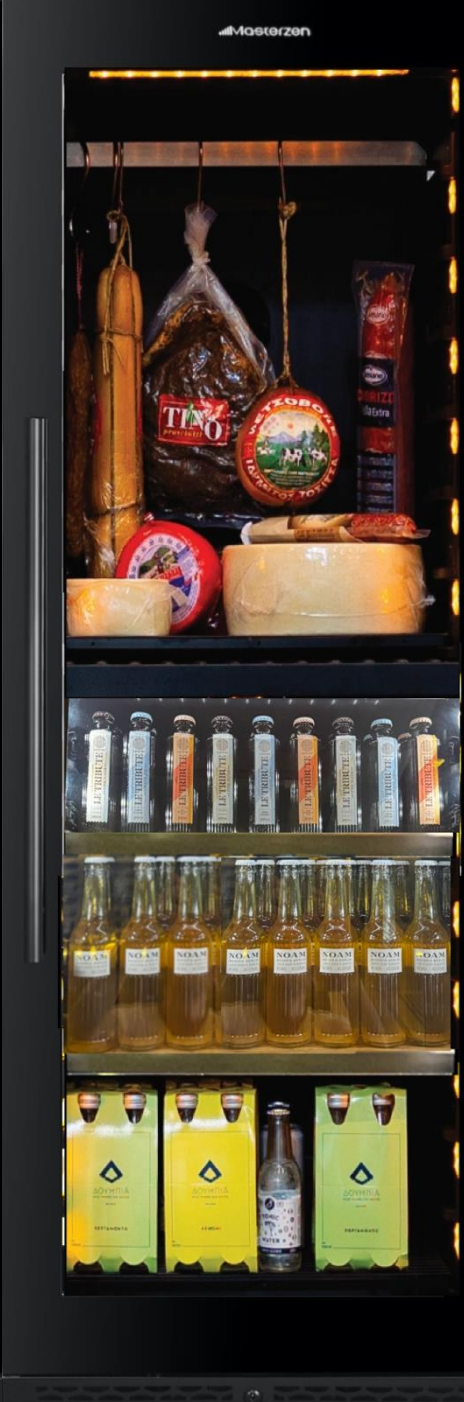
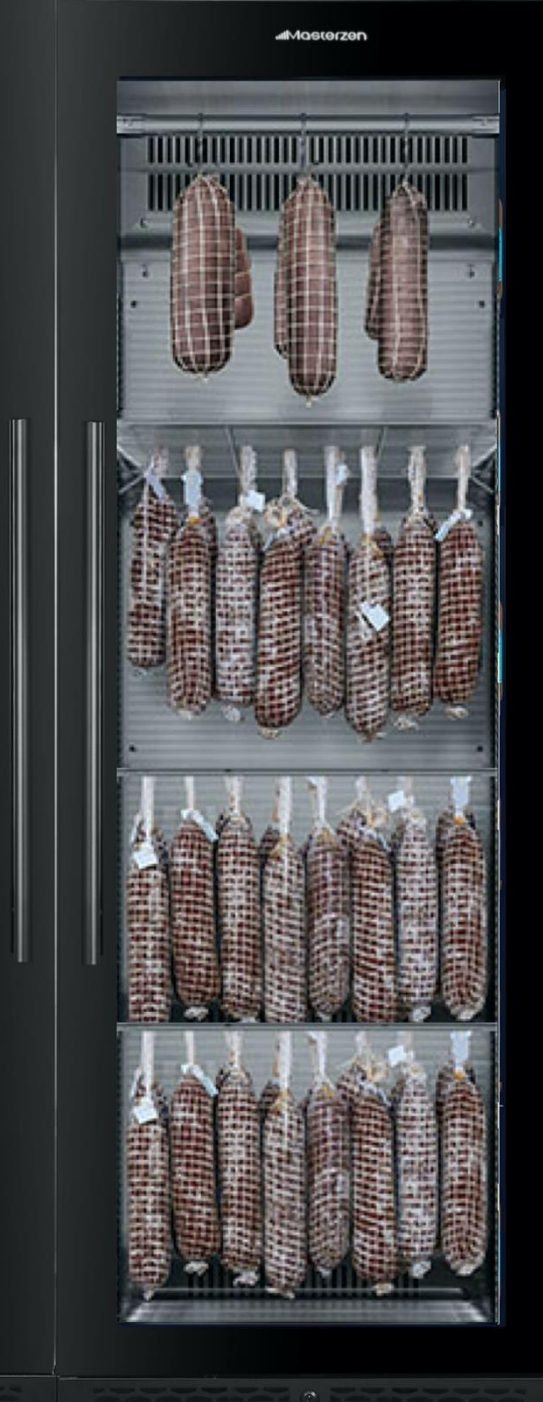
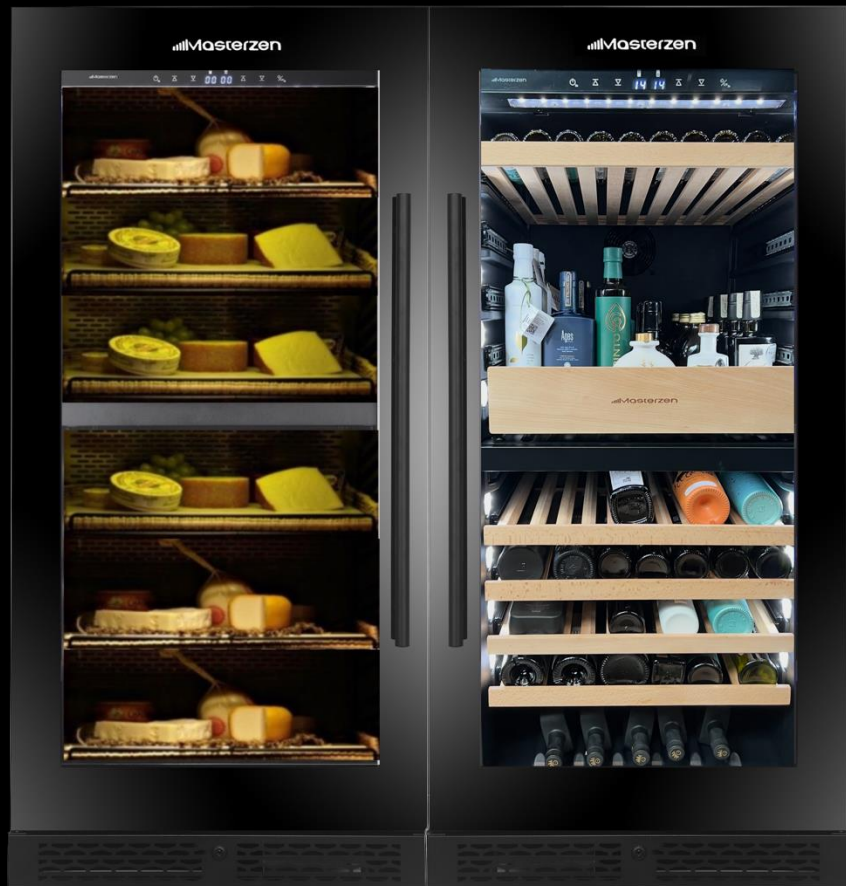
Cheese serving temperatures: between 10–18°C (depending on the type of cheese).

Extra virgin olive oil storage. Ideal conditions for the preservation and presentation of premium olive oils.



Specialised chambers for cheese/salumi, Olive oil, beverages

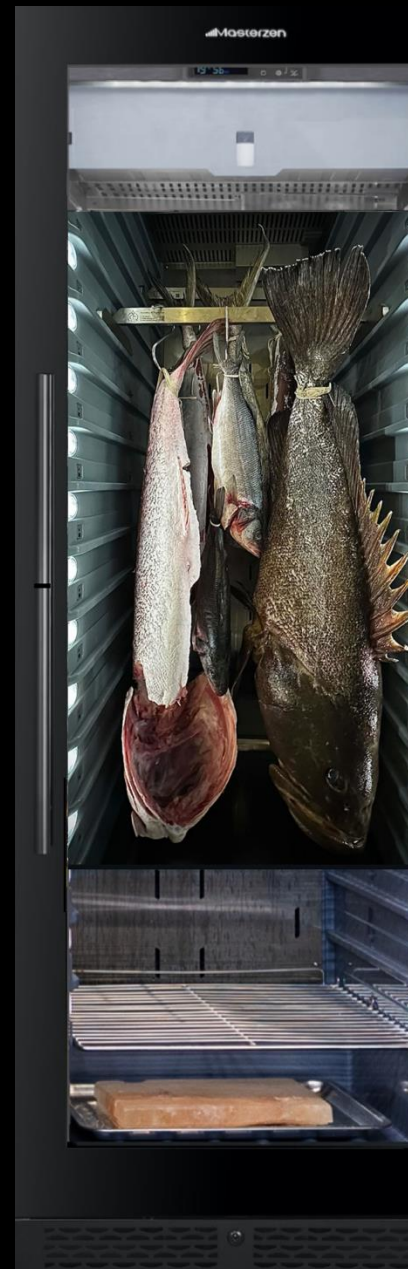
	Width	Depth	Height	Installation type	Full Glass Black Door	SS Inox	Décor Panel	Black door, Small Handle
XPR 46 SS Inox Outdoor	59,5	57	82	Εντοιχίσιμη / Ελεύθερη		✓		
XPR 46B Black	59,5	57	82	Εντοιχίσιμη / Ελεύθερη			✓	✓
XPR 46B drawer	59,5	57	82	Εντοιχίσιμη / Ελεύθερη	✓	✓	✓	
XPR F180	59,5	72	Εντοιχίσιμη / Ελεύθερη	✓				
XPR F180DT	59,5	72	172	Εντοιχίσιμη / Ελεύθερη	✓			



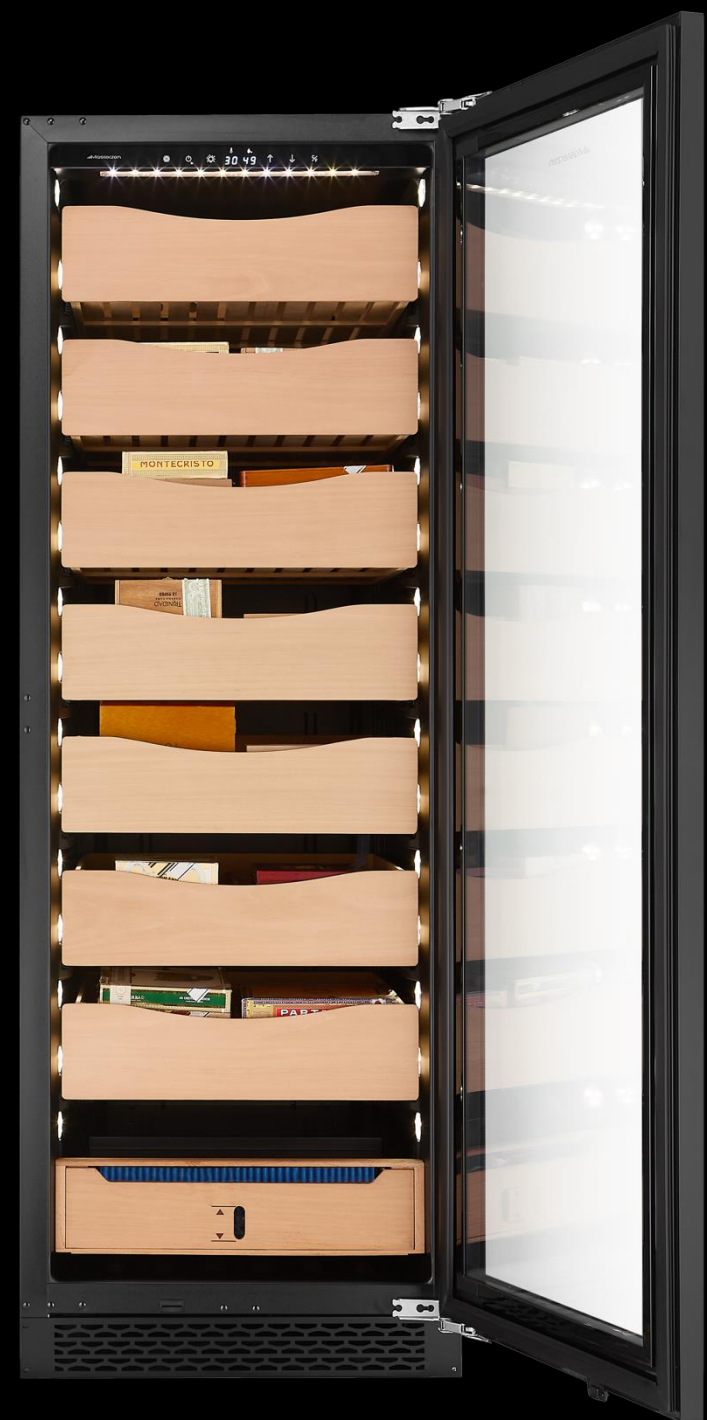
Dry Age

Dry Age cabinets: Suitable for maturing Meat, Fish, Cheese, Salumi

	Width	Depth	Height	Installation type	Full Glass Black Door	SS Inox
XPR 180 Dry Age	59,5	71	172	Εντοιχιζόμενη / Ελεύθερη	✓	✓
Σύνθεση Dry Age & Wine	120	71	172	Εντοιχιζόμενη / Ελεύθερη	✓	✓
XPR 300 Dry Age	75	71	201,5	Μόνο Ελεύθερη	✓	✓
XPR 180 Dry Age	59,5	72	172	Εντοιχιζόμενη / Ελεύθερη	✓	✓
XPR 300 Dry Age	75	71	201,5	Μόνο Ελεύθερη	✓	✓



Cigar Humidor



	Width	Depth	Height	Installation type	Full Glass Black Door	SS Inox	Décor Panel
XPR 24C Cigar Humidor	59,2	55,5	45,5	Εντοιχίσιμη / Ελεύθερη	✓		✓
XPR 40C Cigar Humidor	48,5	60	82	Μόνο Ελεύθερη	✓		
XPR 46C Cigar Humidor	59,5	57	82	Εντοιχίσιμη / Ελεύθερη	✓	✓	✓
XPR 180C Cigar Humidor	59,5	72	172	Εντοιχίσιμη / Ελεύθερη	✓		✓



Illustration of various different
possible configurations and clientelle photos

Masterzen



Masterzen



Masterzen



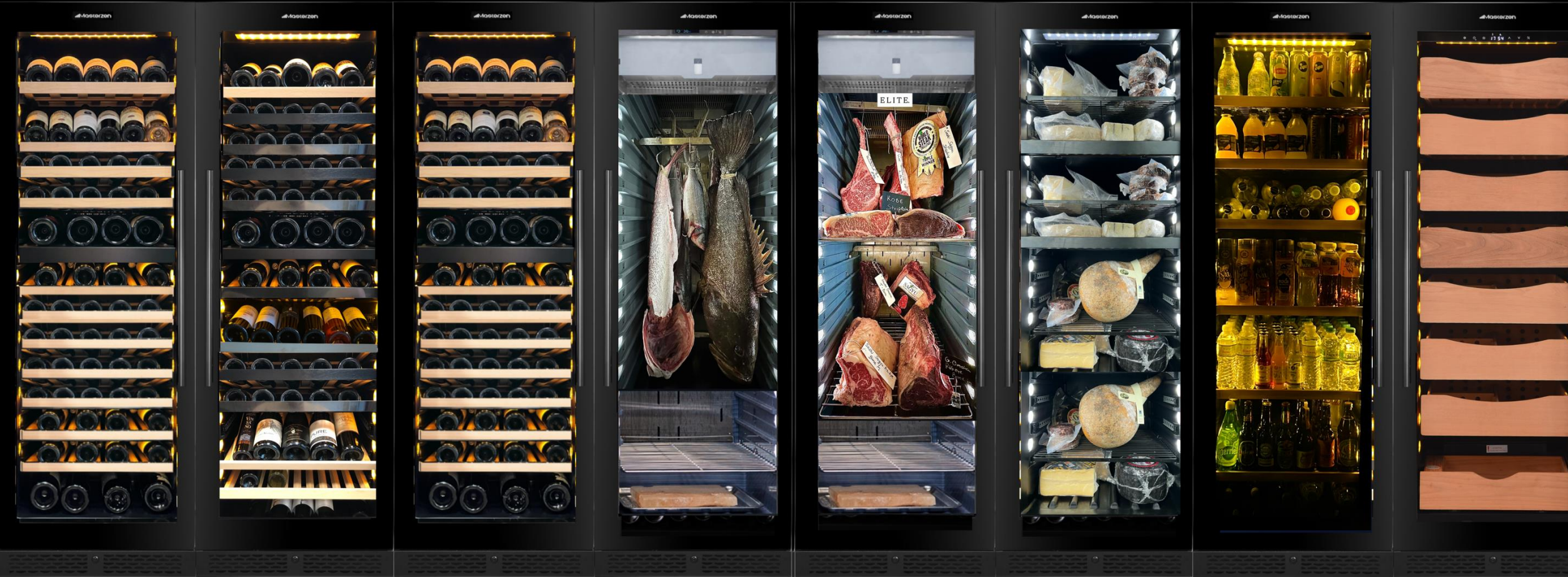
Masterzen



Masterzen



180 series, Full range of options









Athens: Delta ΚΠΙΣ.Νιάρχος, Μεγάλη Βρετανία Alexander's Bar, Matshuhisa Athens (Astir Palace Vouliagmenis), Electra Pallace Zohos, FourSeasons Mercato, House of NYNN @ the Ilisian, Blue Fish Vouliagmeni, Plaki, Noah Athens, Heritage Hill Athens, Χελώνα Κάβα Νέκταρ, Fabrica του Ευφρόσυνου, Milton's, Binger Drinker, Beef Bar, Deals, Οινόσημο, Oinoscent, IEK Praxis, Δειπνοσοφιστήριο, Senta, Cava Halari, Faidon's Athens, Αφρόφαρο, Olea, New Habits, Jeroboam, Soil, Brix Wines, Thespiis, 750ml, OKRA, Domes Makris Athens, Base Grill, Base Grill Γλυφάδα, Ateno, Τραβόλτα, Patio @ The Margi, Belon, Cellier, Tsaknakis Bros, Home & Kitchen, Teddy's Elixir, Teddy's Elixir by the Sea, Πύργος Πετρέζα, Kalua Athens, Krabo, Cookoovaya, Ex Machina, Petit Cafe, Οινοποιείο Μυλωνά, Boutzounis FineWines, Rakor, Notia Medcare, Οινοποιείο Παπαγιαννάκος, Amphibian, Moshi Moshi, Brunello, Focu Sauvage, Seasabelle

Salamina: Ο Κάκιος **Αίγινα:** Μούρτζης **Αράχωβα:** Ο Μπάμπης

Thessaloniki: MyCava, Παλαιά Αθήνα, Cava Fiali, Iberico, Πσαράς, Τσιπουράδικο Γερμανός, Το Πάρκο, Marais, Tello **Halkidiki:** Metoxi Sani, Avaton Resort, Casa Mercedes, Agrovision

Santorini: Canaves Oia, Katikies Garden Selene, Katikies Chromata, Sphinx, Kaliya, Fousteris, Sunset Αμμουδι, Οινοποιείο Αργυρός, Mystique Hotel, Τέρψη Εν Οία, Mia's, Villa Murat, Astarte Suites, Magma(Hyatt) Resort Santorini, Thalami, TheAthenianHouse, Μεταξύ μας, Wine Villa, Remvi

Mykonos: Scorpios, Solymar Beach Bar, Lotus, Familia, Aroma Bar, 180 Sunset Bar, Κουκάς, Precious Mykonos, Archipelagos, Cali Mykonos, Kalesma Pere Ubu, YI Hotel Mykonos, Kensho Ornos, Byblos

Tinos: Kommisa, Potopoleion, ο Ντίνος, Vaptistis Winery **Andros:** Ο Γιαννούλης **Tzia:** ZenBlue Villas, Bohemian Kea

Paros: Crios Beach Bar, Koukos, Karino, Cava Iosif, Γλαύκος, Paros Agnanti, Akrokeramo, Vione Paros **Antiparos:** Cookoovaya, Oliaros Properties, Cava Zoumis **Naxos:** Castel, Δουκάτο, Saint Anna Winery

Syros: Ora RestoBar, Argini-Shipyard Resort Hotel, Ο Μήτσος, Hygge **Ios:** Ios Club Sunset, Liostasi **Milos:** Artemis Seaside, Domes White Coast **Sifnos:** NOS Hotel & Villa

Crete: Onar Seaside Lounge, Pallas Philocaly Chania, Antipodas, Χαραλαμπάκης, Silva Δασκαλάκη, Chantalouka Villa, Ρείση "Παραδοσιακό καφενείο", Despina Ελούντα, Κουζινερί, Palm Beach Club, Premium Butcher Χατζάκης, Avli Kriti, Alibertos, Seareenity Villa, Οινοποιείο Διαμαντάκης, EchooftheSea, IV Leonis, Loukoulos, Minos Beach Art Hotel, Minos Palace

Rhodes: Electra Pallace, Apollo Blue, Apollo Beach, Gran Café, Ακρες (Λίνδος), Elysium Resort & Spa, Yannis Bar, The Wine Hotel, Basilico **Kos:** Diamond Collection Hotels, Κωακο, Ωρομέδων, Sovereign Beach Hotel **Leros:** Persiana Burger House **Samos:** Erato Hotel **Chios:** Αλάτι+Πιπέρι

Corfu: Pomo D'Oro, Παξινός, Corfu Retreats, Μεσημέρης **Zakynthos:** Lesante Blu, Porta Del Mar, Αυλή των Γεύσεων, Carre **Λευκάδα:** PineWood, Ράχη **Parga:** Aegis **Preveza:** Cava Γκάφα

Ioannina: Aristi Mountain Resort Zagori, Ev Αρίστη **Florina:** Θωμάς

Hydra: Ομιλος Υδρας, Sunset Hydra **Spetses:** Poseidonion Grand Hotel, Tarsanas **Korinthos:** Εβίβα **Mani:** Calme Suites, Ταβέρνα της Λέλας, Μεδίκων **Ναύπλιο:** Itria

CostaNavarino: WineClub by Cellier Greotel **Olympia** Riviera, Resort King Saron Hotel, **Dexamenes** Seaside Hotel **Kalamata:** Wine Kiosk

Komotini: ο Φάρος **Xanthi:** The Distiller **Alexandroupoli:** Σόλο **Orestiada:** Padron Bar **Serres:** Ελλήνων Γεύσεις

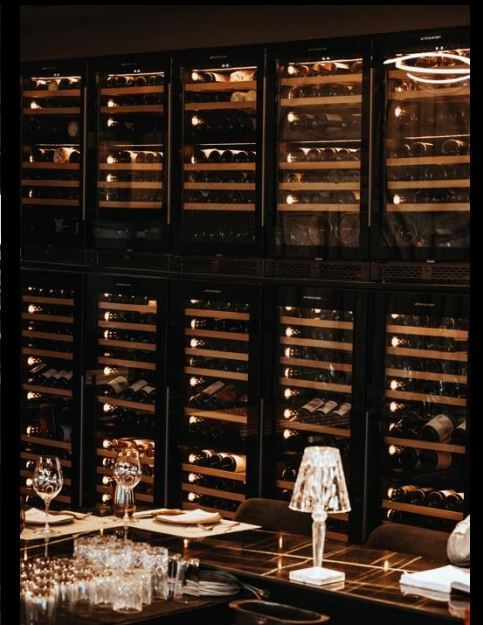
Veria: Βεργιώτικο **Naousa:** Whole Bunches **Giannitsa:** Κάβα Γεωργιάδη **Trikala:** Ananti Resort **Kozani:** Τα Γραβάδικα **Kastoria:** GaitanisMeat House

Larisa: Nonna Rossa, Cava Rokos, Café Ermis, Κάβα Κώστα, Undo Appetizer Curve **Volos:** Don by Red Nose **Katerini:** Μώλος

Cyprus: Volta Wine Bar, Minthis Resort, Acane Limassol, Rebuke, Salt & Fire, The Landmark, TopTierRoom, Vinologie, Tartufo, Amathus, Azura

Wineries: Κτήμα Αργυρού, LaTour Melas, Κτήμα Αλφα, Καραμήτρου Monsieur Nicolas, Αίβαλής, Χαραλαμπάκης, Μιχαηλίδης, Silva Δασκαλάκη, Vaptistis, Κτήμα Βογιατζή, Saint Anna winery, Διαμαντάκος, Διαμαντάκης, Οινοποιείο Μυλωνά, Agrovision, Οινοποιείο Παπαγιαννάκος, Σκούρας

Iberico Skg



Soil



Makris Athens



Electra Palace Athens

Zohos restaurant





Base Grill



Base Grill



Masterzen | Urban Cultivator Indoor Garden
MicroGreens, Herbs | Zero Mile Diet

 Urban Cultivator





Vtex. The rapid drink chiller. The perfect solution for restaurants and bars that want to rapidly chill wine and all sorts of drink bottles



Wine Dispensers



Wine Preservation System for Still & Sparkling wines

Preserve the wine for 2 weeks



Durafrost Wine Glass Chiller and Sanitizer



Built in or table top wine preservation system

Cork Furniture



Wine Opener



Masterzen Premium Club Products



Dimitris Stergiopoulos

Founder & Managing Partner

Mail: dimitris@masterzen.gr

LinkedIn: gr.linkedin.com/in/stergiopoulos

Masterzen Showroom

Showroom: Trion Ierarchon 4, Thisio

τηλ: +30.211.1137.029

info@masterzen.gr

Website: www.masterzen.gr

<http://www.facebook.com/masterzen.co>

